

# EVIDENCE TECHNOLOGY MAGAZINE

The magazine dedicated exclusively to the technology of evidence collection, processing, and preservation  
Volume 5, Number 4 • July-August 2007



## Investigating Outdoor Crime Scenes

### SOME OF THE TOPICS IN THIS ISSUE

- Searching for evidence on the bottom of a lake
- Aerial photography guidelines and equipment
  - Underwater crime-scene response
- Interview with the founder of Texas EquuSearch



**Attain accuracy and precision** with the Sarpette® M manual and Sarpette E electronic pipettes in single-, 8-, and 12-channel configurations from Sarstedt, Inc. The Sarpette M manual pipettes feature continuously adjustable volumes from either the dispenser button or thumbwheel. The Sarpette E electronic pipettes are controlled by a high-precision motor and micro-processor to ensure smooth, accurate pipetting. To learn more about Sarstedt pipettes and pipette tips, go to:

[www.sarstedt.com](http://www.sarstedt.com)



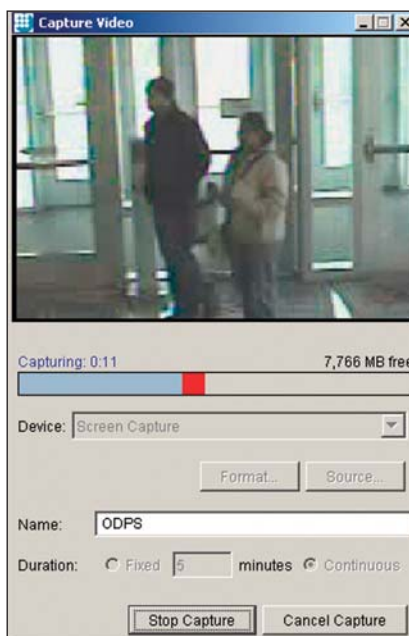
**Protect yourself in the field** with the non-lethal power of the LifeAct™ Guardian Angel® from Kimber. The device contains two powerful charges of the active solution found in the best pepper sprays. Unlike a spray, however, the Guardian Angel actually shoots the concentrated solution at 90 MPH, covering the effective distance of 13 feet in one-tenth of a second. To learn more about this new protective device, go to:

[www.kimberamerica.com](http://www.kimberamerica.com)

## Create timeline charts

with just one click using Timeline Maker Professional from Progeny Software. This easy-to-use software application enables law-enforcement professionals to create, present, and share rich timelines that illustrate events and data. For example, use the timeline to clearly illustrate a suspect's movements, credit-card transactions, or cell-phone records. Or use the timeline to discern patterns or events, or to communicate strategies between multiple law-enforcement agencies for investigative planning purposes. Timeline Maker Professional, as well as the entry-level product, Timeline Maker Basic, are available at:

[www.timelinemaker.com](http://www.timelinemaker.com)



**With so many video sources,** forensic video analysts need a nimble solution that can turn almost anything into a usable, digital form. Salient Stills recently introduced its VFSource video import, screen capture, analog capture, and conversion system, designed to allow law enforcement and other users to quickly and easily capture surveillance and security video for immediate use and forensics. VFSource digitizes analog video and digital video from open and proprietary systems, and easily converts video to popular formats. To learn more about this system, go to:

[www.salientstills.com](http://www.salientstills.com)



## Protect evidence in the field

until you can get it back to the property room with the SafeBOX from Response Technologies Incorporated. The unit is small enough to mount almost anywhere and large enough to protect some of your most valuable possessions. Plus, the SafeBOX is portable. Mount the steel sleeve in your car or crime-scene vehicle. Then, just unlock and slide the safe out of the sleeve to move the lock box from the vehicle to the property room. Additional sleeves can be purchased so that the SafeBOX can be moved and stored in multiple locations. To learn more about this product, go to:

[www.response-tech.com](http://www.response-tech.com)



## Collect, query, report, manage,

and share information on virtually any law-enforcement incident using Connect Suite from BlueStreak. This field reporting system is designed specifically for the needs of small- to mid-sized law-enforcement agencies. This managed-services solution provides comprehensive field-reporting capabilities while eliminating the need for costly technical resources, hardware investments, and maintenance costs. Report almost anything, from traffic accidents to criminal investigations. To learn more about Connect Suite, go to:

[www.bluestreakconnect.com](http://www.bluestreakconnect.com)